

SUN | DASH
PERFORMANCE | TANNING





revitalize!

JK NORTH AMERICA

Welcome to JK-Group, the largest and most technologically advanced commercial tanning equipment manufacturer in the world. As a global tanning industry powerhouse, and parent to Sun Ergoline, JK-Group products are consistently the #1 choice among salon owners.

Why?

Backed by two universally preferred and distinctly unique product brands, **Ergoline** and **Sundash**, Sun Ergoline is uniquely positioned to provide tanning salon owners with all-inclusive, multi-brand equipment packages which are thoughtfully designed to make the most of your salon's space, budget and customer demands.

How?

Each brand, while extraordinary unto itself, perfectly compliments the other.

Ergoline, with its premium features and leading-edge UV Technologies, represents the epitome of style, technology and German engineering prowess.

Sundash, the established, American engineered and manufactured icon is prized for its power, quality, dependability and ease of operation.

For more than 30 years, both Sundash and Ergoline tanning systems have consistently delivered unmatched tanning performance and have become preferred brands among tanning customers – even in the industry's most competitive environments.

Together, they provide the ability to develop an effective and profitable product mix for your salon with distinctive brand attributes that strategically position your business for maximum customer reach and true, cross-market penetration.

Sun Ergoline offers the most extensive distributor and support network in the industry. And with Sun Ergoline, you not only gain unparalleled product knowledge and customer service, but you also receive ongoing marketing, merchandising and sales support to help grow your salon business.

An experienced, knowledgeable and professionally trained Sun Ergoline representative is available to help you build your successful salon and choose the perfect mix of Ergoline and Sundash equipment for your market.

Call toll-free **888.771.0996** or visit our user-friendly web site www.sunergoline.com.

GO

PRO Performance Tanning Series
Developed for People on the Move

Engineered for people on the go — the **Sundash** PRO Performance Tanning Series appeals to an active lifestyle tanner with a no-frills, no-nonsense attitude and a keen focus on quality.

The PRO Performance Tanning Series features two desirable models along with the popular **Sundash 252 Radius** stand-up unit.



SUN|DASH 332 PRO

- Rugged durability
- 32 x 120-watt Genesis lamps
- 15 or 20 minute exposure schedule



SUN|DASH 332 PRO-1

- 32 x 120-watt Genesis lamps
- 400-watt high-pressure facial tanner
- 15 or 20 minute exposure schedule



SUN|DASH 252 Radius

- Compound radius design
- Optional deluxe dressing room
- 52 x 200-watt, 2-meter tall Genesis lamps
- 12 minute exposure schedule

DISCOVER
THE POWER
OF NON-STOP
PERFORMANCE
TANNING

The Sundash PRO Performance Tanning Series is a perfectly orchestrated combination of brawn, beauty and brains. While their design is sleek and ultra contemporary, the **Sundash 332 PRO, 332 PRO-1** and **252 Radius** are powerful tanning units that are enduring and consistently dependable.

Able-bodied machines for an able-bodied generation.



ON THE MOVE

Tanning customers respond to our new

SUN|DASH PRO Performance Tanning Series.

It fits their mindset and their active lifestyles.

They're focused, but energetic, athletic and on the move.

They're performers at work, at play and in every other aspect of life.

They never slow down and neither should we.

SUN|DASH 332 PRO, SUN|DASH 332 PRO-1

It's no wonder the **Sundash 332 PRO** and **Sundash 332 PRO-1** have become preferred tanning units among savvy tanners who consistently push limits and demand the most from themselves and from each and every tanning experience.

- Optimized materials and the highest quality acrylics, plastics and metals ensure years of consistent usability while keeping its stylish form perfectly polished and presentable.
- Calculated inward slope and angle of the base allows more changing space within the room's interior, so it's less likely to be kicked or dented.
- Tanning performance is everything you'd expect from the world leader in UV tanning technology.



SUN|DASH 332 PRO & SUN|DASH 332 PRO-1

QUICK REFERENCE

- 32 Genesis Lamps | 120 watts each
- High-Pressure Facial Tanner | 400 watts (332 PRO-1)
- Optional External Cooling System



on the ball!



Timing System

- Features automatic delay and post-session cooling
- Controls session length
- Logs lamp hours and session count
- LED timer readout within customer's field of vision



External Cooling System

- Optional super-power body cooling fan has adjustable speed
- Rheostat control system
- Ease of operation
- Maximum cooling



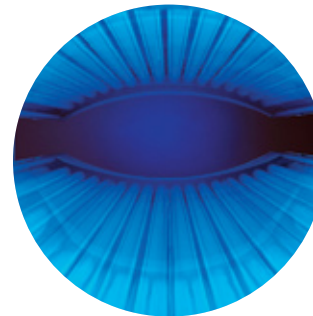
Canopy Lift System

- Precision carbon steel springs
- Designed and manufactured to the precise physical dimension and weight load
- Canopy is lowered or raised to a variety of positions with easy, fingertip control



Internal Cooling System

- 110 CFM (cubic feet per minute) cooling fans strategically positioned throughout the canopy and base
- Maximum air intake and exhaust
- Quick and simple maintenance through easy access fan panels



Acrylic Panels

- 0.170 inches thick
- Highest level of UV transmission
- Exclusive design and forming process strengthens molecular structure
- Body weight is distributed evenly over entire acrylic shield
- Extended life by eliminating uneven wear



Acrylic Fasteners

- Easy turn fasteners
- No tools necessary
- Acrylic can be removed and installed quickly with the turn of a coin



Extended Tanning Surface

- Unique crescent staggered lamp configuration
- Increased usable tanning surface by up to 15%
- Expansive tanning area maximizes lamp efficiency and total effectiveness of the unit



Easy Access Fan Panels

- Effortless access to internal cooling fans
- Quick and easy maintenance without entering the unit's main frame



Ballast and Lamp Drive System

- Equipped with proprietary Sundash SmartCell ballasts
- Weight and operating cost is significantly reduced
- Ensures a cooler and quieter tanning experience



500 lb. User Capacity

- Heavy gauge steel frame superstructure ensures user capacity of 500 lbs.
- Solid form and molded plastic components accent high-profile design



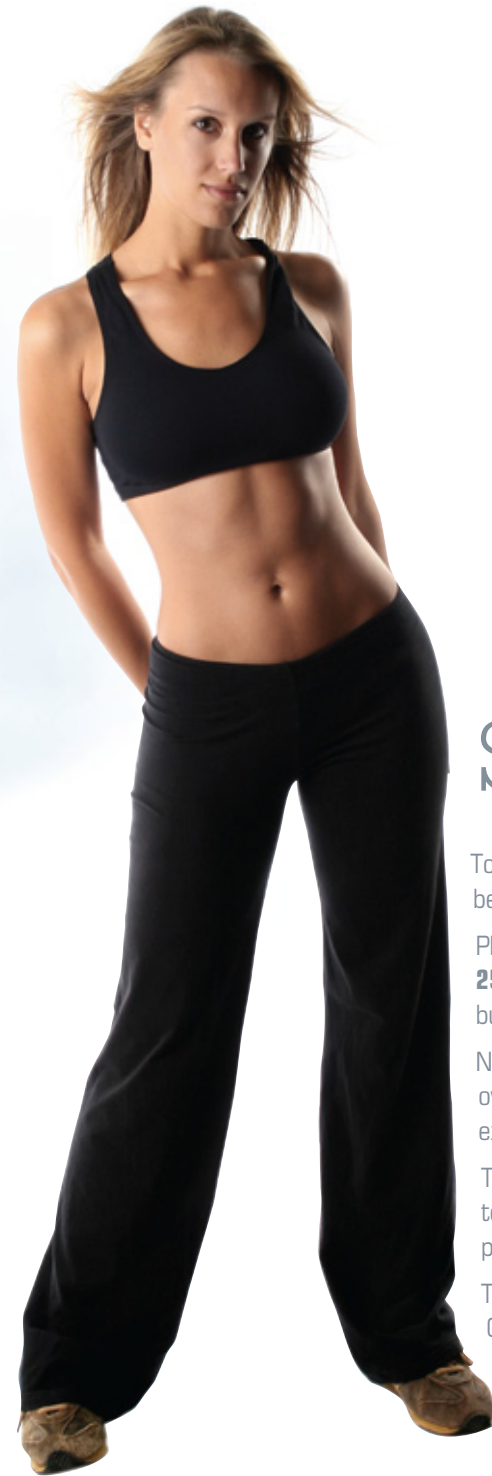
Optimized Footprint

- Design is optimized to fit small spaces
- Recommended room size is 7 ft. x 8 ft.



Contemporary Design

- Clean, modern and sleek
- Enhances any salon décor
- Taller base engineered for easy and comfortable accessibility



stand tall!

SUN | DASH 252 Radius

Today, more and more tanners prefer a stand-up tanning unit and Sundash can help you put a beautiful tan well within reach for these discriminating customers.

Photogeometrically engineered to provide a standing, open-air tanning environment, the **Sundash 252 Radius** delivers a beautifully even, full-body tan in a 12 minute exposure schedule for these busy tanners on the go.

Now, even the tallest tanning customer can get an evenly balanced tan from head to toe. With over 6 ½ feet of PRO Performance tanning power, the Sundash 252 Radius is equipped with 52 extra-long, 2-meter tall, SHRX-2 tanning lamps.

The 1,600 CFM Transflow ceiling fan maintains the tanning environment at an optimum temperature for maximum comfort. Additional 110 CFM fans, located in each of the four lamp panels, separately cool the internal components including the lamps and ballasts.

The Sundash 252 Radius also features two full-length, floor-to-ceiling support columns. Constructed of heavy-duty brushed aluminum and securely mounted, they provide solid support for customers of all heights and weights.



SUN | DASH 252 RADIUS

QUICK REFERENCE

- ▶ 52 Lamps | 200 watts and 2 meters long each
- ▶ 12 Minute Exposure Schedule
- ▶ Fan Cooling System



Timing System

- ▶ Features automatic delay and post-session cooling
- ▶ Controls session length in minutes and seconds
- ▶ Logs lamp hours and session count
- ▶ Monitors operating temperature, incoming voltage and operating cost per session
- ▶ LED timer readout within customer's field of vision



Support Columns

- ▶ Conveniently and comfortably positioned
- ▶ Heavy-duty brushed aluminum
- ▶ Solid support for customers of all heights and weights



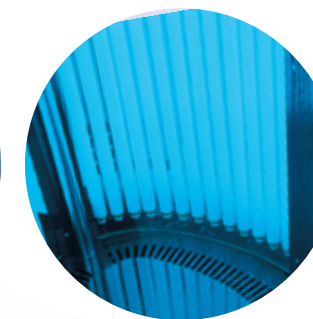
Cooling System

- ▶ Commercial strength
- ▶ 1,600 CFM (cubic feet per minute) Transflow ceiling exhaust fan
- ▶ Maximum air intake and exhaust
- ▶ Quick and simple maintenance through easy access fan panels
- ▶ Electronic thermostats measure internal operating temperature and ambient temperature



Dressing room

- ▶ Optional on any **Sundash 252 Radius**
- ▶ Spacious accommodations
- ▶ Heavy gauge extruded aluminum main frame
- ▶ Locking mechanism provides solid, secure and private environment
- ▶ Clothing hooks and vanity mirror included



Acrylic Panels

- ▶ Cover each lamp bank
- ▶ Highest level of UV transmission
- ▶ Four panels of 0.15-inch acrylic
- ▶ Keeps 2-meter lamps free of UV-reducing dust, dirt, hair and other foreign substances
- ▶ Provides an effective, transparent barrier between customers and lamp surfaces



Enhanced Design

- ▶ Clean, modern and sleek
- ▶ Perfectly complements the **Sundash 332 PRO** and **Sundash 332 PRO-1**
- ▶ Enhances salon décor

SUN | DASH

PERFORMANCE | TANNING

SUN ERGOLINE, A Division of JK Products & Services, Inc.
1 Walter Kraatz Drive
Jonesboro, Arkansas 72401 USA
p 888.771.0996
f 870.935.3618
e www.sunergoline.com



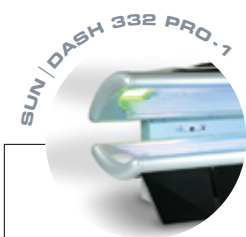
SUN | DASH



power up!



SUN | DASH 332 PRO



SUN | DASH 332 PRO-1



SUN | DASH 252 Radius

MAXIMUM EXPOSURE	15 or 20 minutes	15 or 20 minutes	12 minutes
UV LAMPS	32 x 120-watt Genesis	32 x 120-watt Genesis	52 x 200-watt, 2-meter Genesis
HIGH-PRESSURE FACIAL	—	1 x 400-watt VIT	—
LENGTH	85"	85"	open: 63" closed: 51"
WIDTH	41"	41"	39.5"
HEIGHT	open: 50" closed: 40"	open: 50" closed: 40"	92"
WEIGHT	590 lbs.	595 lbs.	1,650 lbs.
RECOMMENDED ROOM SIZE	8' x 7'	8' x 7'	6' x 8'
VOLTAGE	120/208/240V 1Ø NA 3Ø	120/208/240V 1Ø NA 3Ø	120/225V 1Ø 120/225V 3Ø
TOTAL POWER CONSUMPTION	3,000 watts	3,400 watts	13,500 watts
ELECTRICAL DRAW	13 amps	15 amps	35 amps 3-pole, 60 amps 2-pole
CIRCUIT BREAKER	20 amp	20 amp	50 amp 3-pole, 80 amp 2-pole
NUMBER OF WIRES REQUIRED	4	4	4 1Ø 5 3Ø
TIMER	Intellitan (T-Max)	Intellitan (T-Max)	Intellitan (T-Max)
BALLAST	SmartCell	SmartCell	1.8 amp choke-start
COOLING FAN	Optional	Optional	Standard
COLOR	White or Black	White or Black	Black

The information contained herein is the copyrighted property of JK Products & Services, Inc. No person, firm, corporation or entity is authorized to reproduce or transmit this material or any portion thereof without the expressed written permission and consent of JK Products & Services, Inc. JK Products & Services Inc. reserves the right to change product designs, features, pricing services, etc., without notice. JK Products & Services Inc. makes no guarantees on income, return on investment, market conditions, performance, etc., with any undertaking using its products and services. Past performance is not indicative of future results. **NOTICE:** Read the mandatory FDA warning label found on every tanning machine for important information on potential eye injury, skin cancer, skin aging and photosensitive reaction and proper use. Compliant, protective eyewear must be worn when using any indoor tanning device or system. © 2008 JK Products & Services, Inc.